



UNIVERSITY COLLEGE TATI (UC TATI)

FINAL EXAMINATION QUESTION BOOKLET

COURSE CODE	: BME 1033
COURSE	: TECHNICAL DRAWING (AutoCAD)
SEMESTER/SESSION	: 2-2023/2024
DURATION	: 3 HOURS

Instructions:

1. This booklet contains 5 questions. Answer ALL questions.
2. All answers should be written in CAD File (.dwg) saved in the **Thumb Drive** provided.
3. Save your drawing files in to the created folder:
22B0XXXX_FINAL_CADLABX_WSXX.
(22B0XXXX is your matrix number), (WS is your workstation number)
4. Write legibly and draw sketches wherever required.
5. If in doubt, raise your hands and ask the invigilator.

DO NOT OPEN THIS BOOKLET UNTIL YOU ARE TOLD TO DO SO

THIS BOOKLET CONTAINS 7 PRINTED PAGES INCLUDING COVER PAGE

TECHNICAL DRAWING (BME1033)

Instruction:

Please ensure that all the answers to be saved together in 1 CAD file and located at the Desktop in a folder. The folder name is: **20B0XXXX_FINAL_CADLABX_WSXX**
All units are in millimeter (mm).

QUESTION 1

Reproduce the geometrical construction drawing as a Figure 1 as a standard drawing:

- Object line (10 marks)
- Construction line (5 marks)
- Dimensioning (5 marks)

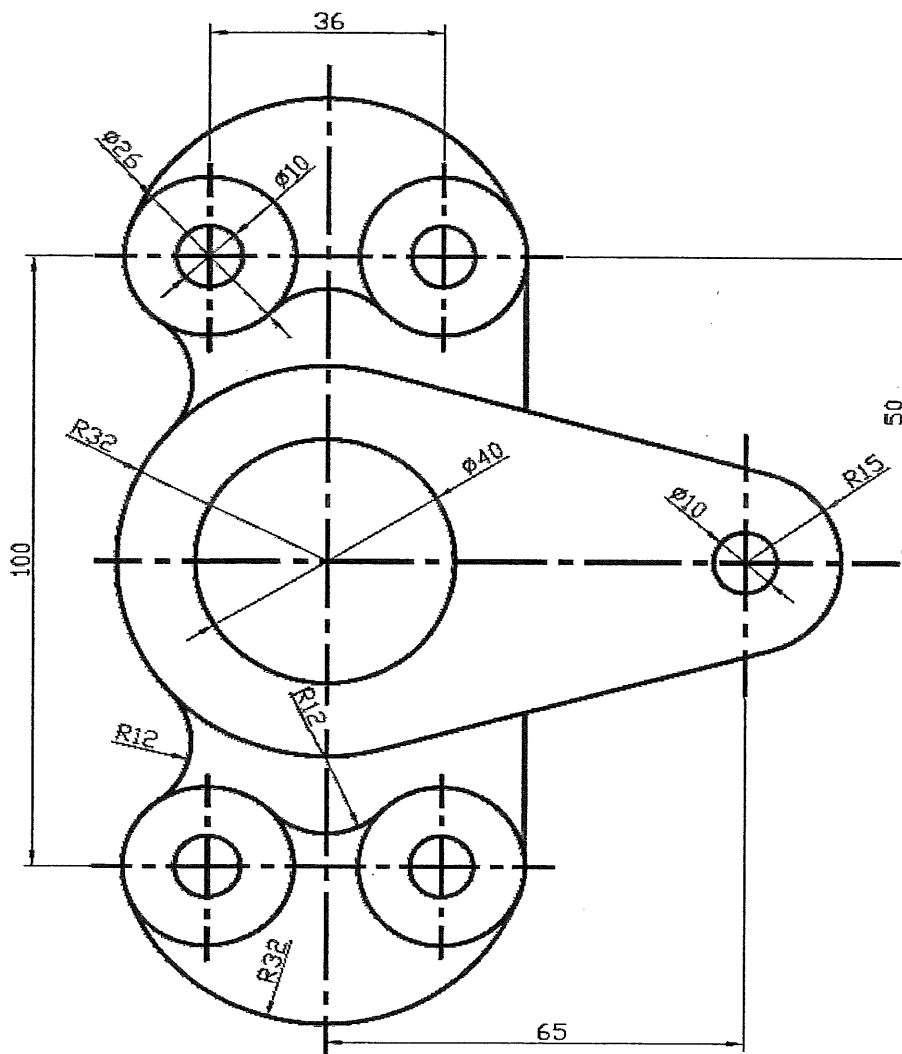


Figure 1

QUESTION 2

Reproduce the geometrical construction drawing as a Figure 2 as a standard:

- a) Object line (10 marks)
- b) Construction line (5 marks)
- c) Dimensioning (5 marks)

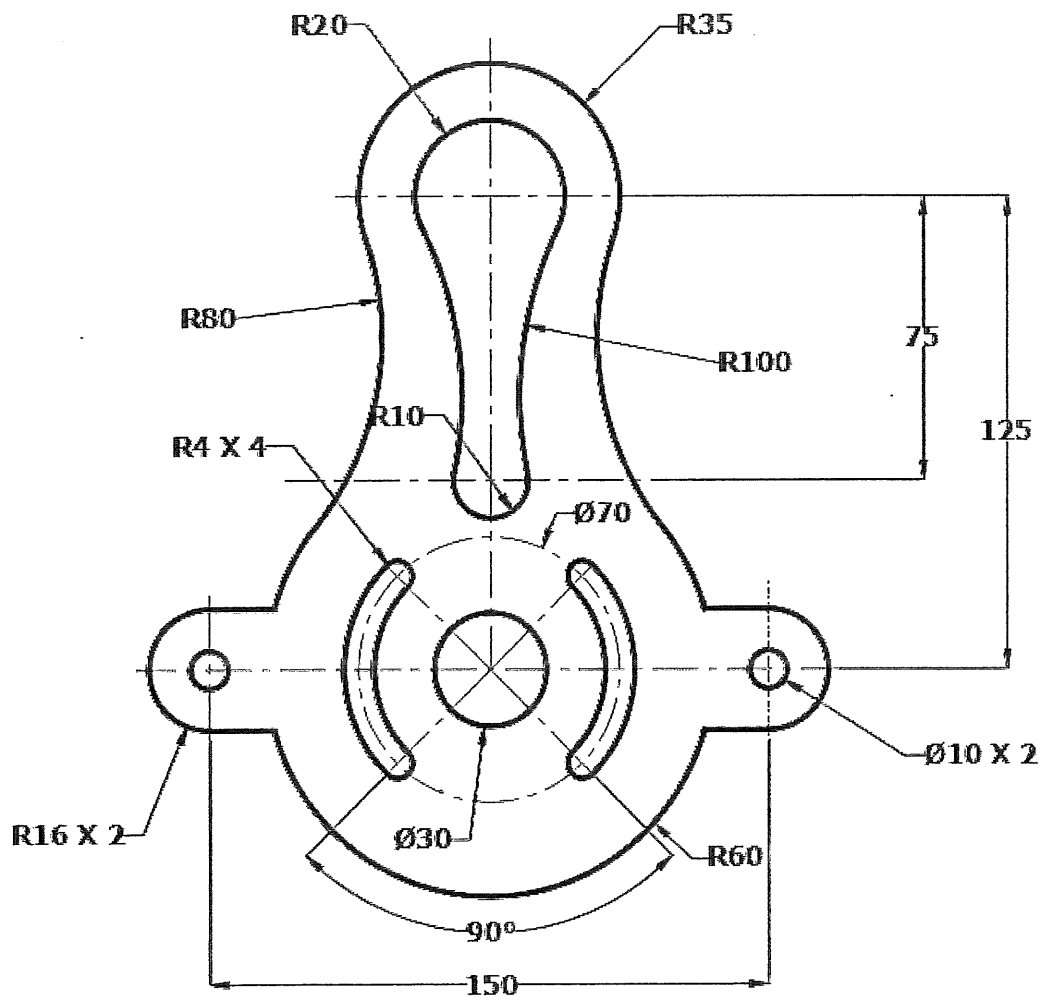


Figure 2

QUESTION 5

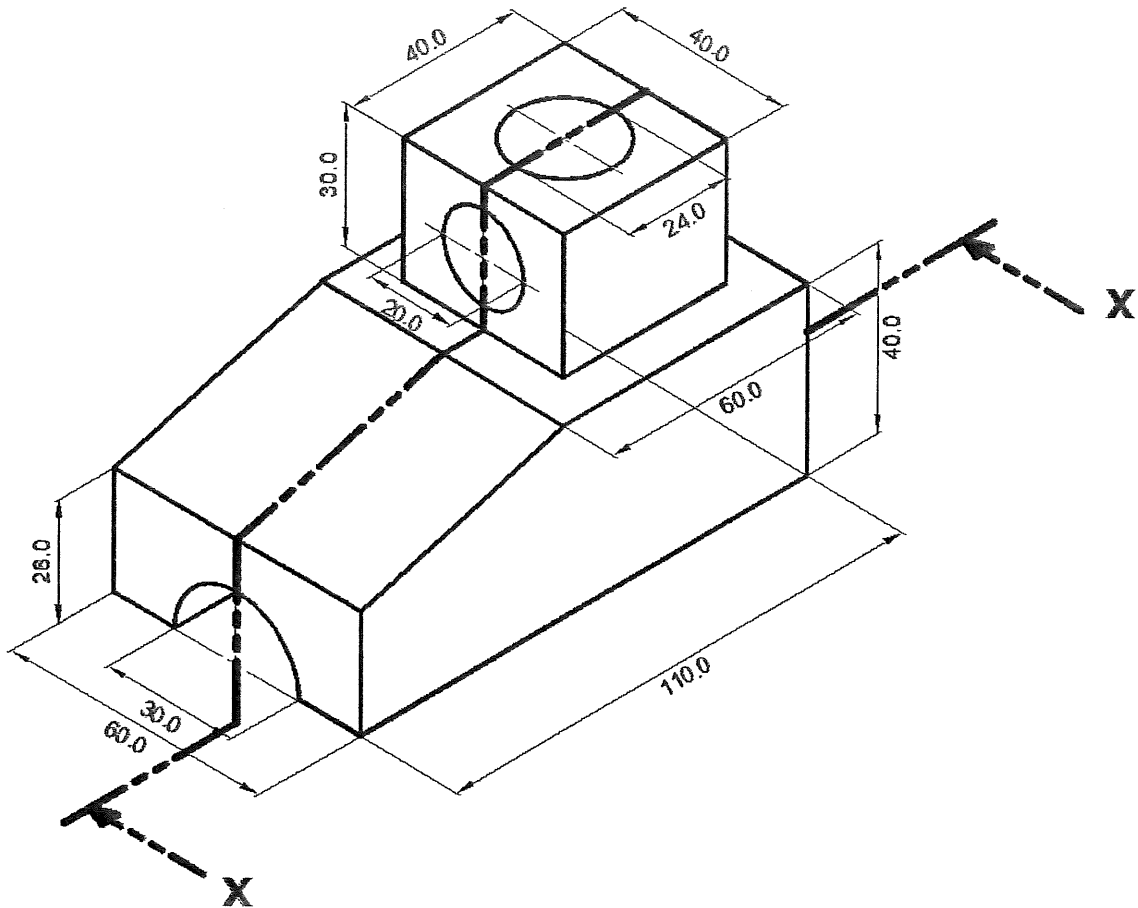


Figure 5

Figure 5 shows the isometric view of a part. **Construct** cross sectional view and orthographic projection of following object in three standard views according in full scale, using third angle projection.

- | | |
|----------------------------------|-----------|
| a. Front sectional view from X-X | (5 marks) |
| b. Plan view | (5 marks) |
| c. Right side view | (5 marks) |
| d. Dimensioning | (5 marks) |

End of questions

TECHNICAL DRAWING (BME1033)

Criteria	Marks
All questions answered will be marked according to the answer schema	/100

